



CLARK ST ELEVATION

**4537 North
CLARK St**

REVISED 5-8-17

BUILDING HEIGHT REDUCED FROM
5 STORIES + PENTHOUSE to
4 STORIES + Roof Deck Stair Enclosures

Height of Btm of Proposed Roof Stair Enclosure
Framing (54'-7") is LOWER than the Max Height
of a Parapet wall (55'-0") in current C1-2 zone

TOP of PARAPET
Height Reduced by 11'-4"

Overall Height to top of
Penthouse reduced by 13'-8"

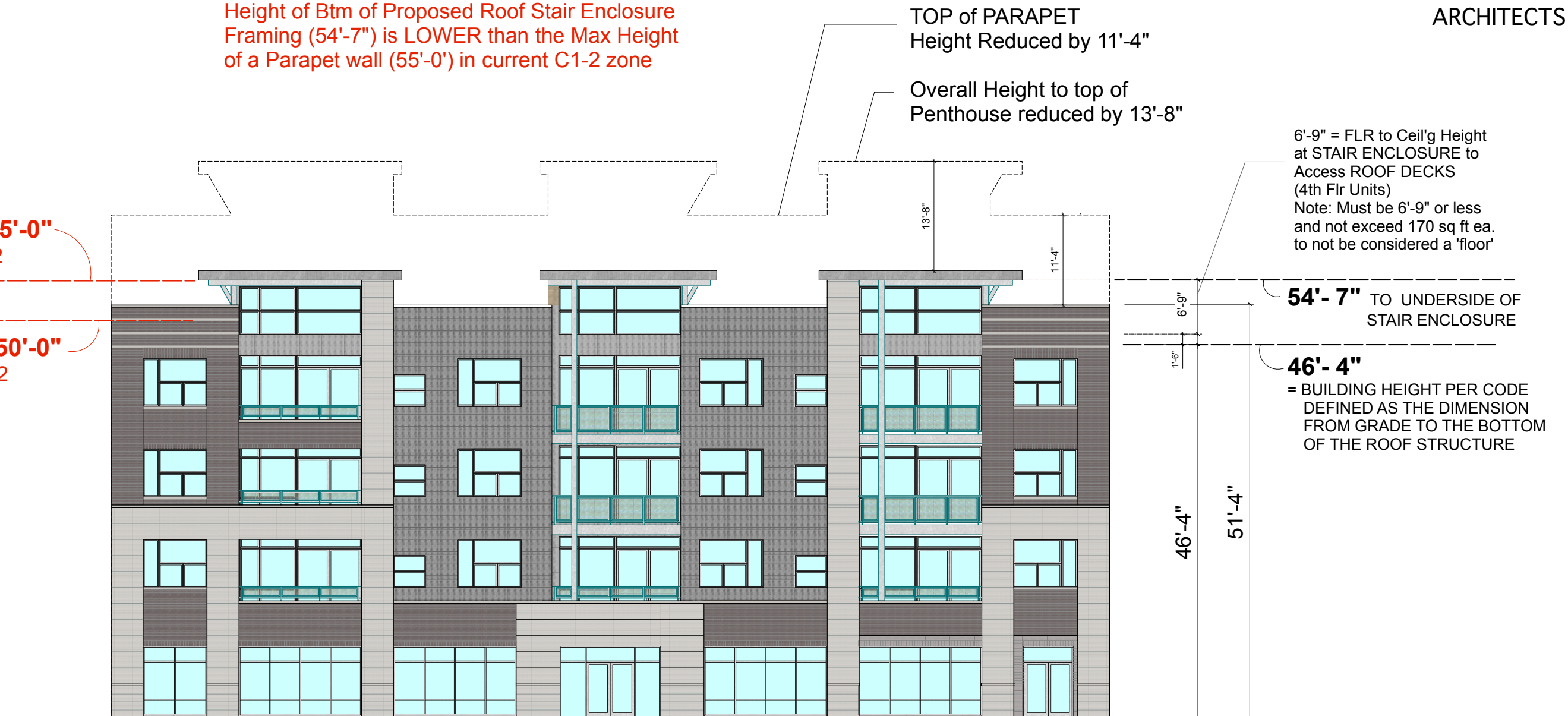
6'-9" = FLR to Ceil'g Height
at STAIR ENCLOSURE to
Access ROOF DECKS
(4th Flr Units)
Note: Must be 6'-9" or less
and not exceed 170 sq ft ea.
to not be considered a 'floor'

PARAPET HEIGHT = **55'-0"**
EXISTING ZONE C1-2

MAXIMUM HEIGHT = **50'-0"**
EXISTING ZONE C1-2

54'-7" TO UNDERSIDE OF
STAIR ENCLOSURE

46'-4"
= BUILDING HEIGHT PER CODE
DEFINED AS THE DIMENSION
FROM GRADE TO THE BOTTOM
OF THE ROOF STRUCTURE



**4537 North
CLARK St**

CLARK ST ELEVATION

REVISED 5-8-17

BUILDING HEIGHT REDUCED FROM
5 STORIES + PENTHOUSE to
4 STORIES + Roof Deck Stair Enclosures

Height of Btm of Proposed Roof Stair Enclosure
Framing (54'-7") is LOWER than the Max Height
of a Parapet wall (55'-0") in current C1-2 zone

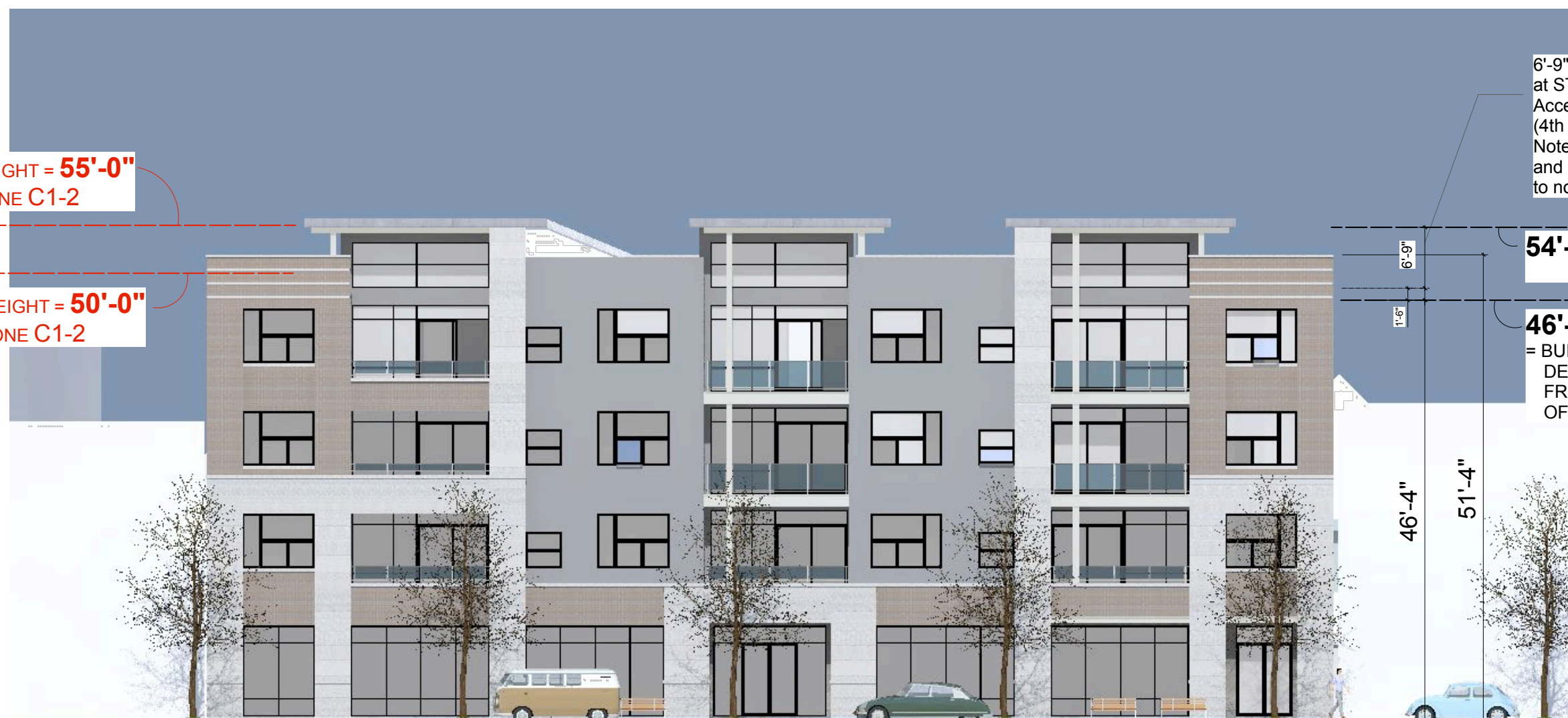
PARAPET HEIGHT = **55'-0"**
EXISTING ZONE C1-2

MAXIMUM HEIGHT = **50'-0"**
EXISTING ZONE C1-2

6'-9" = FLR to Ceil'g Height
at STAIR ENCLOSURE to
Access ROOF DECKS
(4th Flr Units)
Note: Must be 6'-9" or less
and not exceed 170 sq ft ea.
to not be considered a 'floor'

54'- 7" TO UNDERSIDE OF
STAIR ENCLOSURE

46'- 4"
= BUILDING HEIGHT PER CODE
DEFINED AS THE DIMENSION
FROM GRADE TO THE BOTTOM
OF THE ROOF STRUCTURE



**4537 North
CLARK St**

CLARK ST ELEVATION

REVISED 5-8-17



STONEBERG + GROSS
ARCHITECTS

**4537 North
CLARK St**

FRONT VIEW FROM ABOVE

REVISED 5-8-17



**4537 North
CLARK St**

REAR VIEW FROM ABOVE

REVISED 5-8-17



Rear Looking South



Rear Looking N-W (Elev. +26')



**4537 North
CLARK St**

REAR ELEVATION

REVISED 5-8-17



**4537 North
CLARK St**

SOUTH SIDE ELEVATION

REVISED 5-8-17