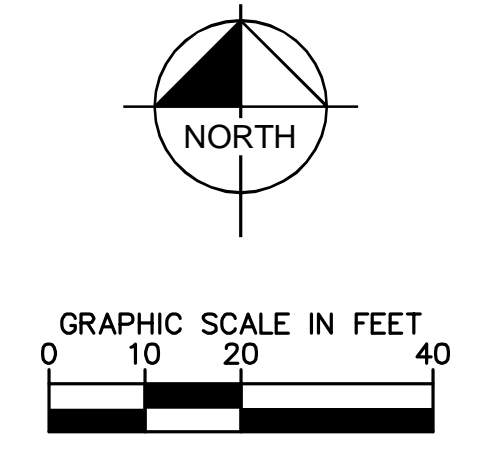
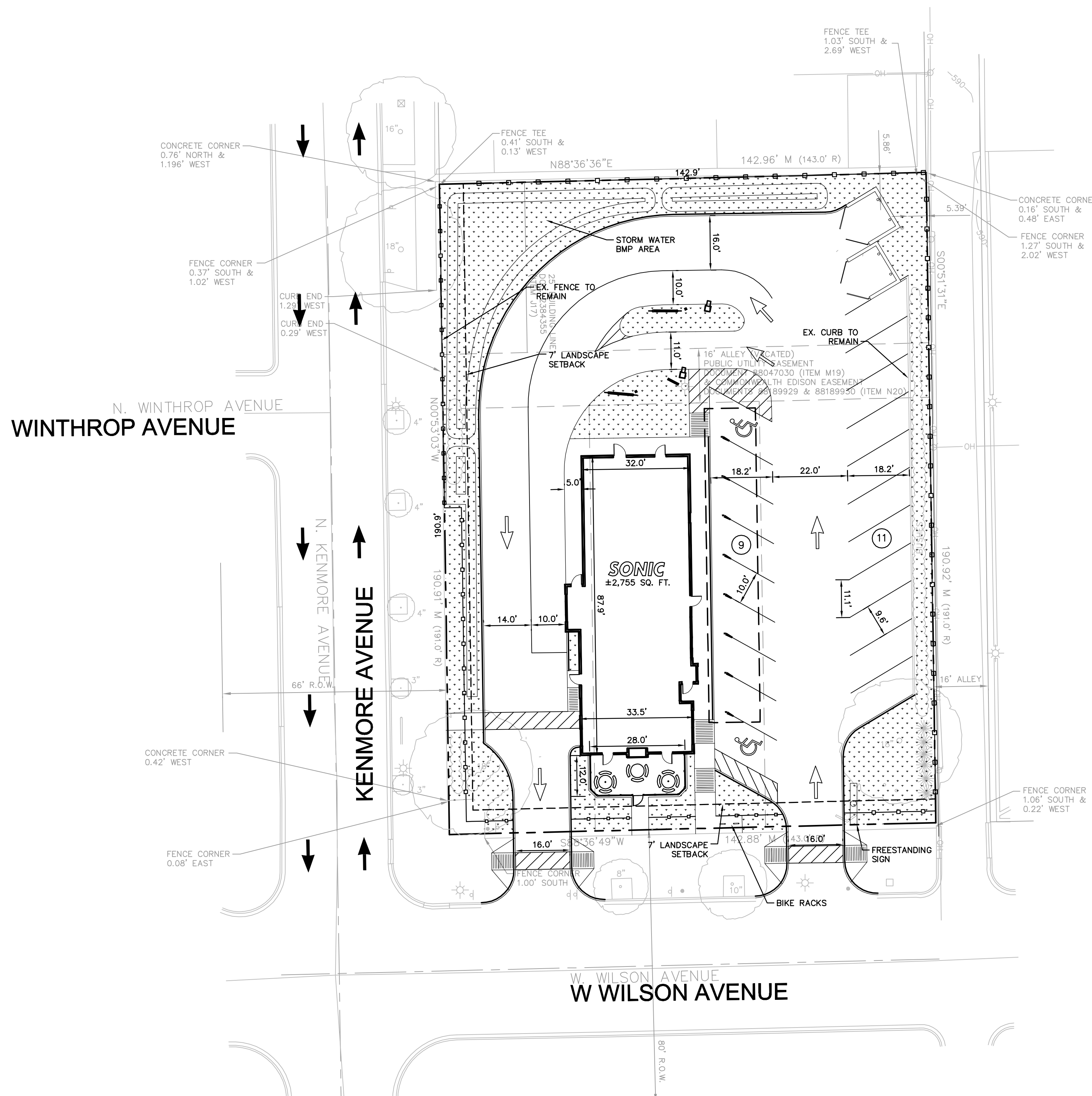
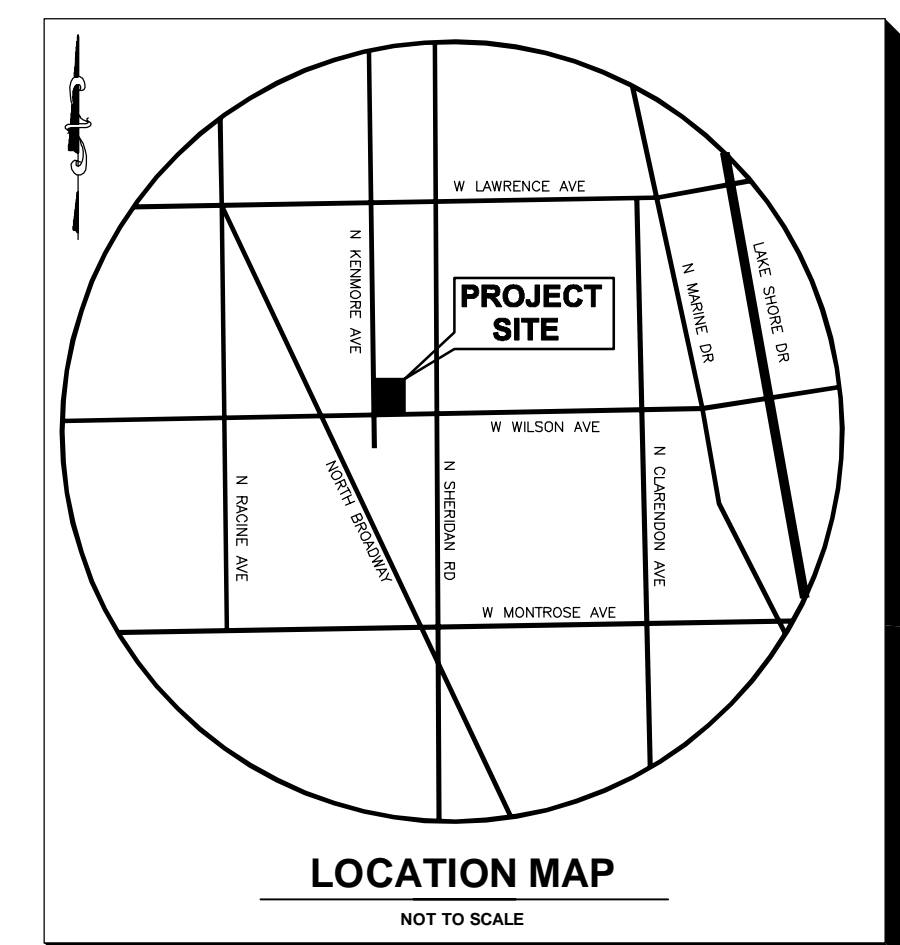


Drawing name: K:\CHS_LDEA\16098011_Sonic_CHN\SSA_12_Design\CADD\PlanSheet\C1.0_SITE-16098011.dwg Layout1 Nov 30, 2012 12:45pm by: jath.muller
 This document, together with the concepts and designs presented herein, is an instrument of service, in intended only for the specific purpose and client for which it was prepared. Reuse of and improper reliance on this document without written authorization and adaptation by Kimley-Horn and Associates, Inc. shall be without liability to Kimley-Horn and Associates, Inc.



SITE DATA TABLE	
GENERAL SITE DATA	
ZONING	B3-2
LAND USE	RESTAURANT
PROPOSED LOT AREA	±27,284 SF (±0.63 ACRES)
BUILDING SQUARE FOOTAGE	±2,755 SF
EX. IMPERVIOUS AREA	0.51 AC (22,255 SF)
EX. PERVIOUS AREA	0.12 AC (5,029 SF)
% GREENSPACE	19.0%
PR. IMPERVIOUS AREA	0.46 AC (19,921 SF)
PR. PERVIOUS AREA	0.17 AC (7,363 SF)
% GREENSPACE	27.0%
PARKING DATA	
DRIVE-IN STALLS	8 SPACES
PATIO STALLS	12 SPACES
TOTAL SPACES PROVIDED	20 SPACES



SHEET NO.
C1.0

SITE PLAN
SONIC
1016 W WILSON AVENUE
CHICAGO
ILLINOIS

Kimley-Horn and Associates, Inc.
 Engineering, Planning and Environmental Consultants
 1001 Warrenville Road, Suite 350
 Lisle, IL 60532
 Phone: 312-726-9445
 Fax: 312-726-9449
 Project No.: 16098011
 Contact: JUSTIN MULLER

BOOM REAL ESTATE DVLPMT, LLC
 901 W. Madison St., Suite 1014
 Chicago, IL 60607
 tel: 312-209-9700
 fax: 312-829-6992



REVISION	DATE	DESCRIPTION