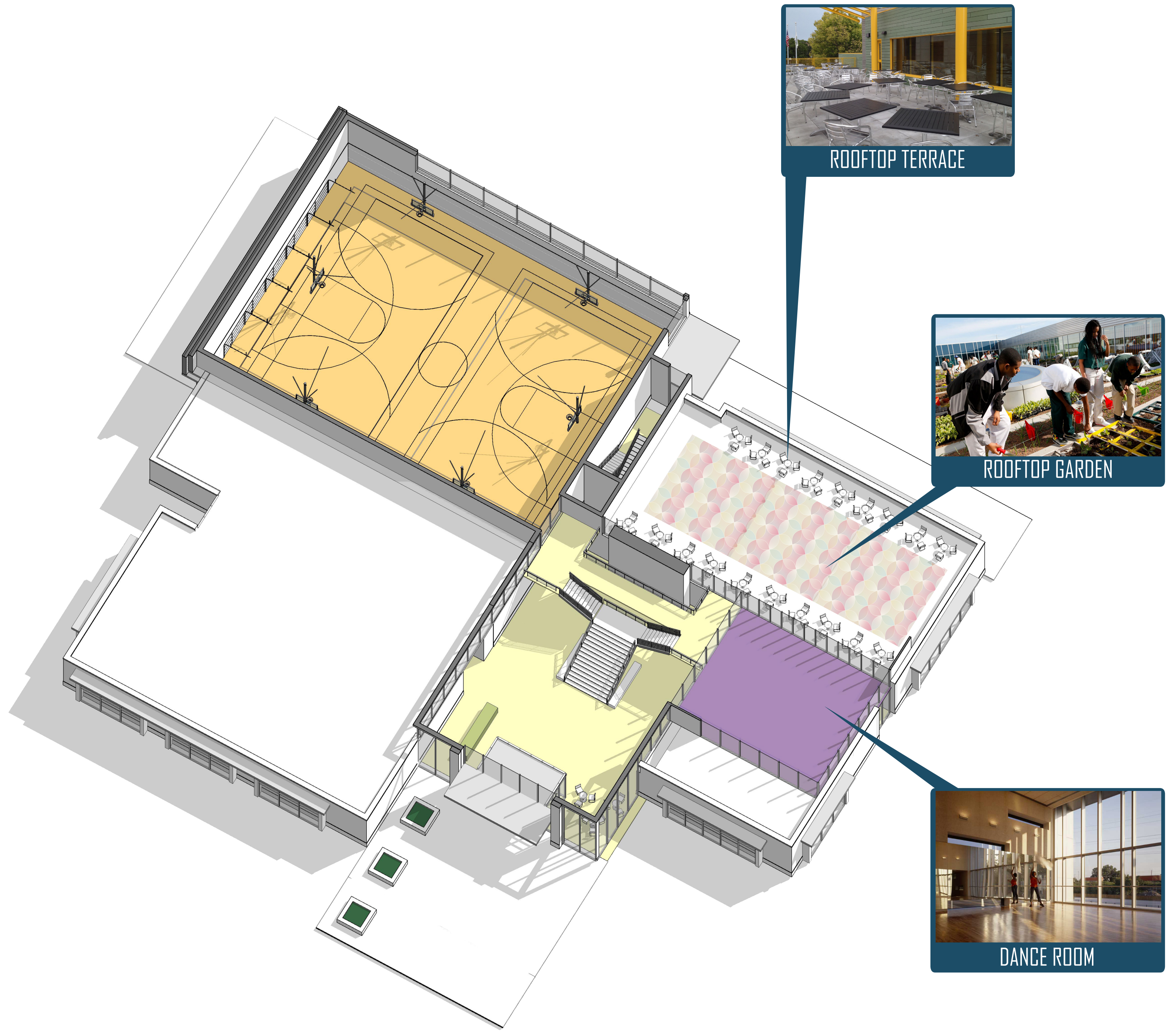


# NEW BUILDING: NEW LOCATION

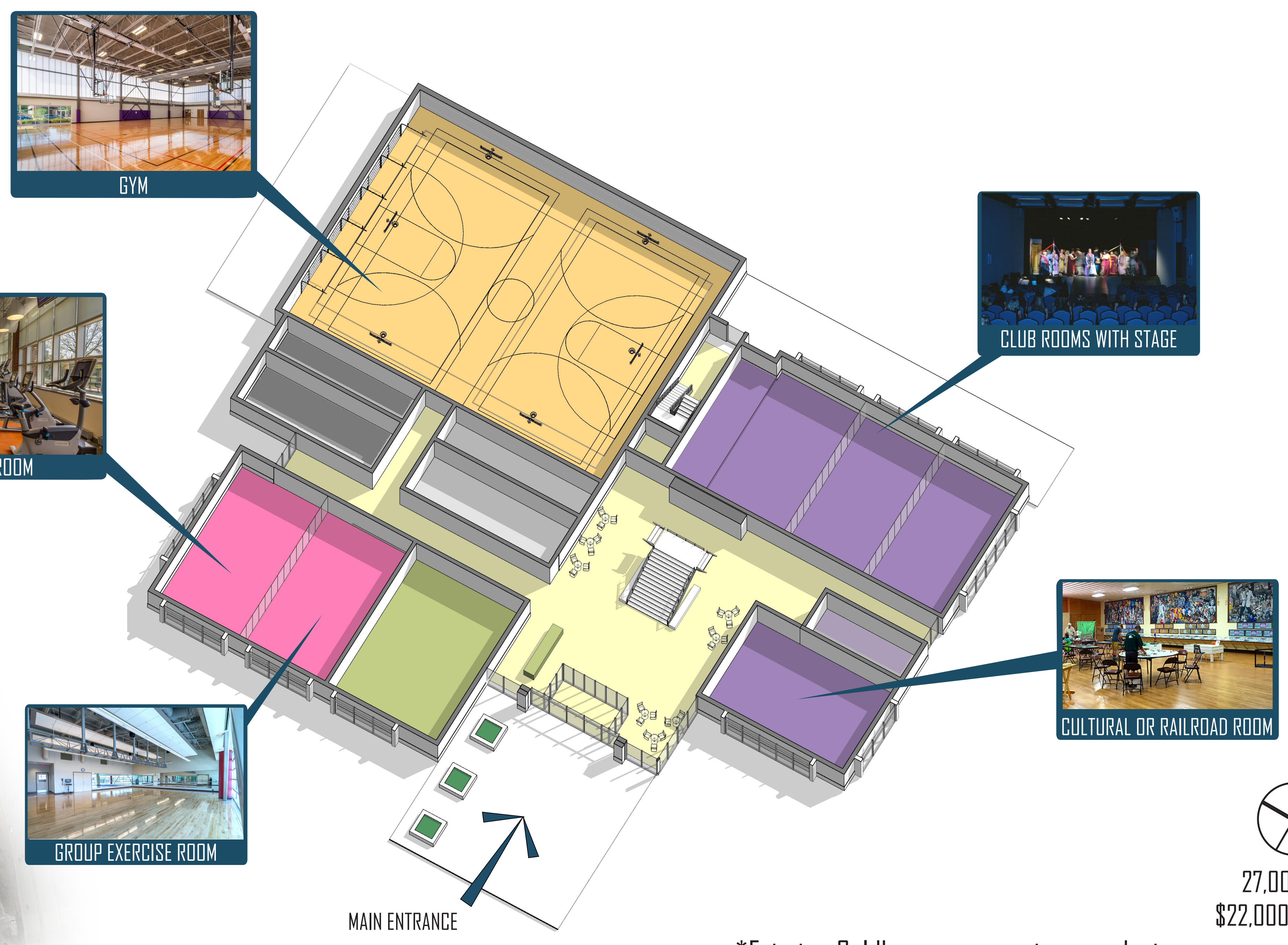
## Upper Floor

### LEGEND

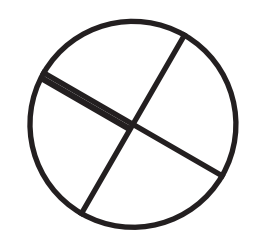
- CLUB ROOM / CULTURAL PROGRAM / MODEL RAILROAD CLUB ROOM
- KITCHENETTE
- GROUP EXERCISE
- FITNESS
- GYM
- LOBBY, BREAK OUT SPACE, CIRCULATION
- ADMINISTRATION
- MECHANICAL / STORAGE
- RESTROOMS / LOCKERS
- ROOFTOP GARDEN
- MAIN ENTRANCE



## Ground Floor



⊕ SITE DIAGRAM



27,000 SF  
\$22,000,000

\*Existing fieldhouse to remain open during construction.  
\*Disclaimer: cost estimates based on current probable 2019 construction cost in IL.

# CLARENDON COMMUNITY CENTER PARK